

FULL MARINA SKYLINE VIEW

# ADDRESS THE BAY

EMAAR BEACHFRONT

2BR APARTMENT  
BUA 1,264 SQFT





# SKYLINE VIEWS

47<sup>th</sup> floor

Presenting an exclusive opportunity to acquire a remarkable 2-bedroom apartment located on the topmost floor, featuring awe-inspiring panoramic views of the entire marina skyline. This exceptional dwelling stands as a testament to exquisite design, characterized by a seamless transition from the open-concept living space to the dining area. Floor-to-ceiling windows grace the residence, framing the breathtaking vistas and flooding the apartment with an abundance of natural light.



1.5 KM of  
Pristine Beach



Panoramic Views  
of the Sea & Marina



Steps Away from  
Marina & Yacht Club



Direct Access to  
Sheikh Zayed Road



2 Neighbourhood  
Parks



Nearby Licensed  
Restaurants

# FLOORPLAN



## ADDRESS RESIDENCES THE BAY

### 2 BEDROOM TYPE C 2

LEVEL 36-54 |

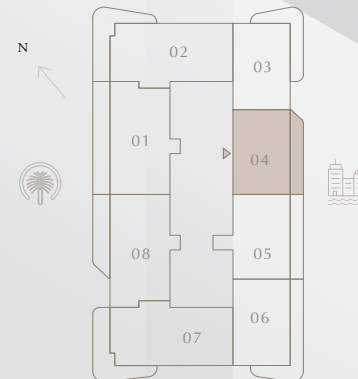
UNIT 04

SUITE AREA	1061.11 SQ.FT.	98.58 SQ.M.
BALCONY AREA	203.22 SQ.FT.	18.88 SQ.M.
TOTAL AREA	1264.33 SQ.FT.	117.46 SQ.M.

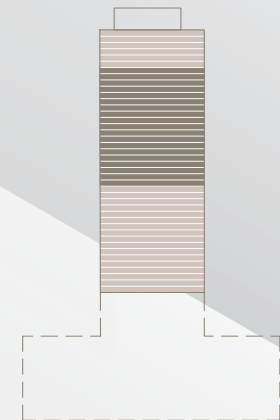


KEY PLAN LEVEL

36-54



KEY SECTION



**IN THE  
HEART  
OF A  
VIBRANT  
LOCATION**

