

FULL MARINA SKYLINE VIEW

ADDRESS THE BAY

EMAAR BEACHFRONT

2BR APARTMENT
BUA 1,345 SQFT





SKYLINE VIEWS

52nd floor

Presenting a rare chance to own a stunning 2-bedroom top-floor apartment, offering unparalleled panoramic views of the marina skyline. This extraordinary home features a thoughtfully designed open-concept living and dining area, creating a harmonious flow throughout. Floor-to-ceiling windows perfectly frame the scenic vistas and bathe the space in an abundance of natural light, enhancing the airy and spacious feel of the residence.



1.5 KM of
Pristine Beach



Panoramic Views
of the Sea & Marina



Steps Away from
Marina & Yacht Club



Direct Access to
Sheikh Zayed Road



2 Neighbourhood
Parks



Nearby Licensed
Restaurants

FLOORPLAN



ADDRESS RESIDENCES THE BAY

2 BEDROOM TYPE C 1

LEVEL 36-54 |

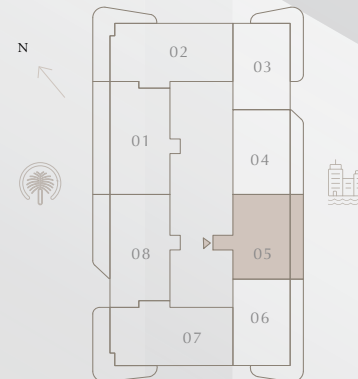
UNIT 05

SUITE AREA	1127.41 SQ.FT.	104.74 SQ.M.
BALCONY AREA	217.43 SQ.FT.	20.20 SQ.M.
TOTAL AREA	1344.84 SQ.FT.	124.94 SQ.M.

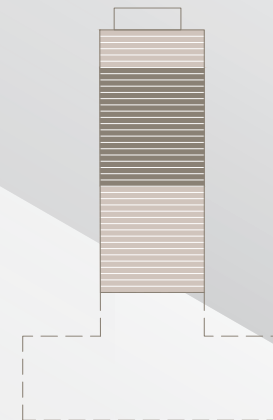


KEY PLAN LEVEL

36-54



KEY SECTION



**IN THE
HEART
OF A
VIBRANT
LOCATION**

