

FULL MARINA SKYLINE VIEW

ADDRESS THE BAY

EMAAR BEACHFRONT

2BR APARTMENT
BUA 1,264 SQFT





SKYLINE VIEWS

54th floor

Discover an exclusive opportunity to own a stunning 2-bedroom apartment on the top floor, offering breathtaking panoramic views of the entire marina skyline. This exceptional residence showcases superb design with an open-concept living and dining area that seamlessly flow together. Floor-to-ceiling windows enhance the space, providing unobstructed views and filling the apartment with natural light.



1.5 KM of
Pristine Beach



Panoramic Views
of the Sea & Marina



Steps Away from
Marina & Yacht Club



Direct Access to
Sheikh Zayed Road



2 Neighbourhood
Parks



Nearby Licensed
Restaurants

FLOORPLAN



ADDRESS
RESIDENCES
THE BAY

2 BEDROOM TYPE C 2

LEVEL 36-54 |

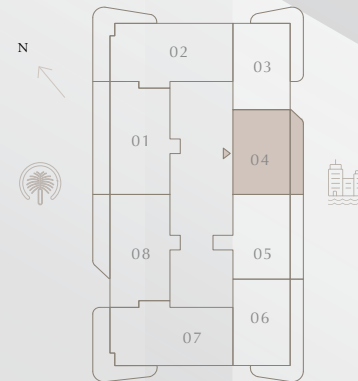
UNIT 04

SUITE AREA	1061.11 SQ.FT.	98.58 SQ.M.
BALCONY AREA	203.22 SQ.FT.	18.88 SQ.M.
TOTAL AREA	1264.33 SQ.FT.	117.46 SQ.M.

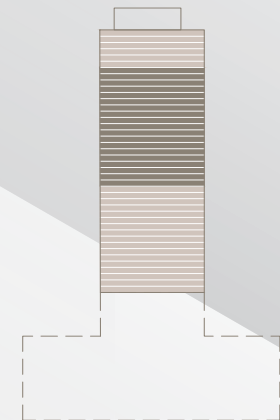


KEY PLAN LEVEL

36-54



KEY SECTION



**IN THE
HEART
OF A
VIBRANT
LOCATION**

